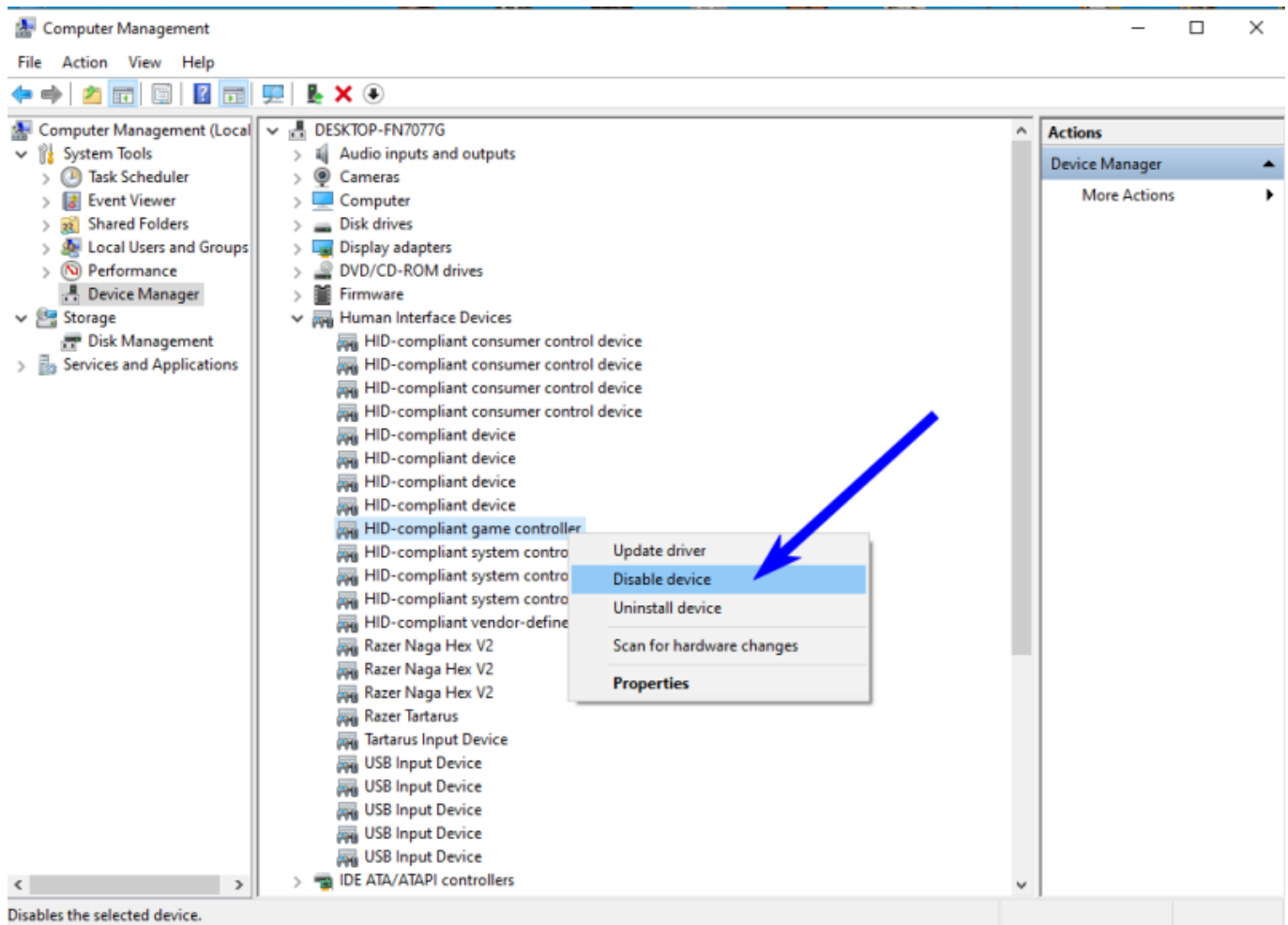


Windows: fix for screen savers

If windows is not able to poweroff display it could be related to some HID devices.

Disable it and it should fix the issue:

Device Manager >> Human Interface Device >> HID-compliant Game Controller >> disable



—
return to [gimbo wiki home page](#)

From:
<https://wiki.gimbo.org/> - wiki.gimbo.org

Permanent link:
https://wiki.gimbo.org/doku.php?id=public:win_fixes_screensaver

Last update: 13.03.2022 05:55

